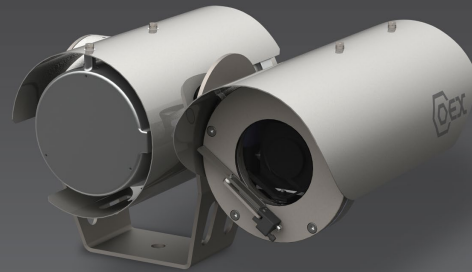


# C3000-1F HD IP with Integrated Power Base Camera Station

The COEX™ C3000 HD IP with integrated power base camera station, for fiber optic housing and integral power conversion, enables mains connectivity negating the need for a separate junction box.



The C3000 HD IP with integrated power base incorporates a 1080P HD video camera module with 30x optical zoom for outstanding image quality.

Dual streaming capability with optional multicasting provides complete flexibility for both live view and recording where bandwidth size may be an issue.

This camera station is a versatile option for pre-existing systems and ensures a straightforward installation process through ONVIF Profile S compliance.

COEX C3000 camera stations are industry leaders for certified temperature ratings, from -55°C (-67°F) to +70°C (158°F).

## Features

- CSAus certification
- IECEx certification
- ATEX certification
- Electro-polished 316 stainless steel, for optimum corrosion resistance
- Native IP H.264 encoding conforming to ONVIF Profile S standards
- In-built web interface allows easy configuration and diagnostics

## Options

- Integral wiper [W]
- COEX™ 'FEWS' wash system
- Fiber optics (multi or single mode)
- Various voltage options 24Vac/dc and 100 – 240Vac

# Specifications

CERTIFICATIONS / RATINGS		[OPTIONS]
ATEX / IECEx	ATEX II 2GD, Ex db IIB/IIC Gb; Ex tb IIIC Db; T4 / T5 / T6	
US Class / Division	Class I, Div 1, Groups A, B, C, D; Class II, Div I, Groups E, F, G; T4 / T5 / T6	
US Class / Zone	Class I, Zone 1, AEx d IIC Gb; Zone 21, AEx tb IIIC Db; T4 / T5 / T6	
EMC	CFR 47, 15.109 and 15.107, EN55022, EN55024, EN61000-6-4, EN 61000-6-2	
CE	CE Compliant	
Ingress Protection	IP66 & IP68 (30m Submersion for 4 hrs) to IEC 60529, Type 6 Enclosure	
C-Tick	On Request	
ENVIRONMENTAL		
Rated Temperature	-55°C to +60°C (T5) [+70°C (T4)] -67°F to 140°F (T5) [158°F (T4)]	
MECHANICAL		
Material	Electro-polished 316 stainless steel	
Window	Toughened glass, thermostatically operated demister [Wiper]	
Mounting	Four as standard with space for up to nine	
Dimensions (W x D x H)	348 x 310 x 219 mm / 13.70" x 12.20" x 12.56" (Base Type 3)	
Tilt Turning Circle	Ø 360 mm / 14.14"	
Mounting Orientation	Upright or inverted	
Weight*1	17 kg / 37.5 lb	
ELECTRICAL		
Power Requirements	100 to 240Vac 50 / 60Hz (Base Type 3); 24Vac 50 / 60Hz or 24Vdc (±10%) (Base Type 3 Option 4)	
Power Consumption	100VA maximum	
CAMERA OPERATION		
Camera Station Functions	Wipe, wash, Aux1, [Aux2] and Aux In	
Wash*1	24Vdc (0.75A max) switched output	
Day/Night Camera Functions	White balance, WDR, backlight compensation, digital zoom, color / mono (IRC filter)	
VIDEO COMPRESSION		
Compression	H.264 Mainline and Baseline Profiles (MPEG4 part 10/AVC)	
Standard	ONVIF Profile S	
STREAMING OPTIONS		
Output Streams	Dual stream with multicast option	
Dual Streaming Mode	Stream 1: Full HD 1080P (25/30fps), 6Mbps Stream 2: Full HD 1080P (12fps), 2Mbps	
Stream Resolution	Full HD 1080P, qHD, WQVGA	
Security Access	HTTPS encryption, digest authentication, user access log	
Security Interface	Web browser view and setup	
Data Rate	Maximum 8Mb/s	
GOP Structure	Default 25/30	
NETWORK		
Interface	10/100 Mbps ethernet	
Protocol	RTP/RTSP, TCP/IP, UDP, IGMP, SNMP, HTTP, NTP	
Password Levels	Administrator / User	
Supported Internet Browsers	Chrome / Firefox / IE version 6 or higher	

CAMERA / LENS	
Image Sensor	1/2.8" Progressive Scan CMOS
Signal System	1080p/29.97, 1080p/25
Effective Pixels	Approximately 2.38 megapixels
Electronic Shutter	1/1 to 1/10,000 sec, 22 steps
Zoom Range	30x zoom (up to 360x with digital zoom)
Minimum Illumination (50%, high sensitivity mode ON)	0.35 lux (shutter speed 1/30 sec)
	0.19 lux (shutter speed ¼ sec, shutter speed ½ sec)
	ICR-ON mode: 0.013 lux (shutter speed 1/30 sec) 0.002 lux (shutter speed ¼ sec, shutter speed ½ sec, 30%) 1.4 lux (shutter speed 1/30 sec)
Minimum Illumination (50%, high sensitivity mode OFF)	0.19 lux (shutter speed ¼ sec, shutter speed ½ sec)
	ICR-ON mode: 0.05 lux (shutter speed 1/30 sec)
Focal Length	4.3 to 129 mm
Angle of View (H)	63.7° to 2.3°
Aperture	F1.6 to 4.7
FIBER OPTICS	
Fibers Required*1	Single or dual fiber
Optical Interface	100Base-Fx
SFP Options	SYNSFP100LFx – 2 fiber, SFP Plug-in Transceiver @1310nm
	SYNSFP100FxpLP – 2 fiber, SFP Plug-in Transceiver @1310nm
	SYNSFP100WLFxA – 1 fibre, SFP Plug-in Transceiver Tx @1310nm, Rx @ 1550nm
	SYNSFP100WLFxB – 1 fiber, SFP Plug-in Transceiver Tx @1550nm, Rx @ 1310nm
Standard Optical Link Budget	> 16dB @ 1310nm (SYNSFP100Fx/10km)
	> 26dB @ 1310nm (SYNSFP100Fx/30km)
	> 19dB @ 1310nm (SYNSFP100WFxA/20km, SYNSFP100WFxB/20km) > 11dB @ 1310nm (SYNSFP100FxpLP)
Transmitter Optical Power	-8 to -15dBm (SYNSFP100Fx/10km / OSDSFP100Fx/20km)
	+0 to -5dBm (SYNSFP100Fx/30km, @1310nm)
	-10 to -20dBm (SYNSFP100FxpLP, @1310nm)
	-8 to -14dBm (SYNSFP100WFxA/20km, @1310nm)
	-8 to -14dBm (SYNSFP100WFxB/20km, @1550nm)
Receiver Sensitivity	< -31dBm (SYNSFP100Fx/10km/ SYNSFP100Fx/20km, @1310nm)
	< -31dBm (SYNSFP100Fx/30km, @1310nm)
	< -31dBm (OSDSFP100FxpLP, @1310nm)
	< -33dBm (SYNSFP100WFxA/20km, @1550nm) < -33dBm (SYNSFP100WFxB/20km, @1310nm)

NOTE: \*1 Dependant on equipment fitted. \*2 Wipers are consumable items that need regular replacement. Please refer to the manual for recommendations and maintenance.

## Synectics

sales@synecticsglobal.com  
synecticsglobal.com

Specifications subject to change. E & OE.

Copyright © Synectic Systems Group Limited, Synectic Systems, Inc., Synectic Systems (Asia) Pte. Limited 2017. All Rights Reserved.

MANUFACTURER OF



CAMERA STATIONS

Reference Number:

C3000-1F-PBHDIP/0317/USL Iss 1