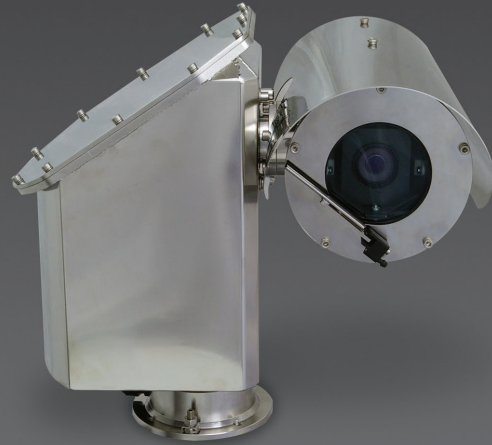


COEX™ C1000 PTZ Marine Camera Station

The COEX™ C1000 camera station features a day / night (color / mono) camera module within a compact lightweight 316L stainless steel housing. The C1000 ensures high quality imaging capabilities in a housing suitable for harsh marine conditions.



The COEX™ C1000 marine camera stations are manufactured from the highest grade, corrosion resistant, electro-polished 316L stainless steel – incorporating state of the art camera and control options.

Integrated with the latest camera imaging technology, the C1000 is compatible with a broad range of control systems and supports all transmission methods including IP and fiber optics.

Features

- DNV Type Approval
- CSAus Certification
- CSA Canadian Certification
- EAC-TR CU Certification
- IP66 & IP67 Rated – Completely Protected Against Dust & Water Ingress, for the Most Demanding Environments
- Type 6 Enclosure
- Electro-polished 316L Stainless Steel, for Maximum Corrosion Resistance
- Low Voltage Operation

- Single Stationary Cable Tail
- Multi-protocol Telemetry for Extensive System Compatibility
- Toughened Glass Window
- Thermostatically Controlled Window Demister
- Removable Camera Chassis for Ease of Servicing

Options

- Integral Wiper [W]
- COEX™ 'MEWS' Wash System
- IP, Fiber Optic Available with Associated Junction Box

Specifications

CERTIFICATIONS / RATINGS		[OPTIONS]
Certifications / Ratings	DNV Type Approval CSAus / CSA Canadian Class 3862 13 and Class 3862 93 EAC-TR CU EMC:61000 CE Compliant IP66 & IP67 to IEC 60529 Type 6 Enclosure	
ENVIRONMENTAL		
Operating Temperature	-45°C to +70°C	
MECHANICAL		
Material	Electro-polished 316L Stainless Steel	
Window	Toughened Glass, Thermostatically Operated Demister [Wiper]	
Pan Operation	360° Rotation @ 11°/sec; Mechanical Limits	
Tilt Operation	180° Rotation @ 5.5°/sec; Mechanical Limits	
Mounting	4 x M8 x 1.25 tapped holes, equispaced on a 4" (101.6 mm) P.C.D.	
Dimensions (W x D x H)	14.29" x 12.21" x 13.31"	
Pan Turning Circle	Ø 16.77"	
Weight	35 lbs	
ELECTRICAL		
Power Requirements	24Vac 50 / 60Hz (±10%)	
Power Consumption*1	50VA Maximum	
TELEMETRY		
Interface	RS485 serial asynchronous data	
Protocols*2	Synectics™, Pelco®, and other industry standard protocols available	
Functions*1	Pan, Tilt, Zoom, Wipe, Wash and Aux1	
Day/Night Camera Functions*1	Optical Zoom, Digital Zoom, BLC, Autofocus, Focus, Color / Mono, Iris, Auto Iris, Frame Integration, White Balance	
CAMERA / LENS		C1000-18 [W]
Video Output	1.0 Vpk-pk CVBS into 75Ω Color NTSC 60Hz [PAL 50Hz]	
Image Sensor	¼" EXview HAD CCD	
Resolution	>550TVL	
S/N Ratio	>50dB	
Zoom Range	18x Zoom (up to 216x with digital zoom)	
Sens-Up (Frame Integration)	2x ~ 128x	
Minimum Illumination	0.7 lux (1/60 integration) 0.04 lux (¼ integration) 0.01 lux (¼ integration)	
Focal Length	4.1 to 73.8 mm	
Angle of View (H)	48° to 2.8°	
Aperture	F1.4 to 3.0	

NOTE: *1 Dependant on equipment fitted. *2 Refer to Synectics for availability and compatibility with other control systems.

Synectic Systems

sales@synecticsglobal.com

synecticsglobal.com

Specifications subject to change. E & OE.

Copyright © Synectic Systems Group Ltd., Synectic Systems, Inc., Synectic Systems (Asia) Pte. Limited 2015. All Rights Reserved.

MANUFACTURER OF



CAMERA STATIONS

Reference Numbers: 03/GF0512_3
C1000-1/0215/USL Iss 7