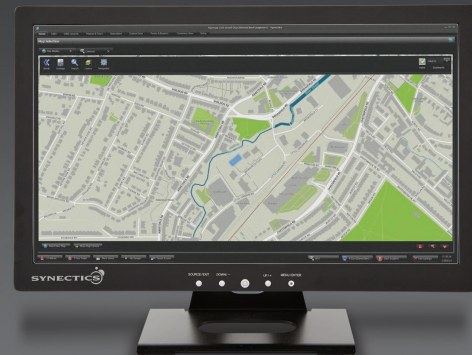


# 22" HD LCD Monitor

**Industrial grade monitor delivering high quality images essential for critical security applications.**



Synectics range of 22" HD industrial grade LCD monitors is available in touch and non-touch screen versions. Developed for the professional user, the monitors feature industrial grade metal casing with a bonded glass screen in a stylish design. Essential for critical security applications, where even the smallest details can be important, the high definition resolution and high contrast ratio ensures exceptional quality images. Composite, VGA and HDMI inputs allow common monitor environment across the operator console regardless of the input source type.

Audio capability offers the option to receive audio feeds simultaneous to viewing video. Complete with an alarm input feature to enable third party switching between input types, Synectics' 22" HD touch and non-touch LCD monitors provide a long lasting, durable solution, suitable for any application or environment.

#### Features

- Touch Screen monitor\* with USB port
- Industrial Grade monitor with bonded glass front and steel casing
- NTSC & PAL Auto Scanning
- Multi-language OSD
- Fast response time to enhance image viewing
- High contrast ratio
- High resolution 1920 x 1080
- 16:9 aspect ratio
- Video loop through
- Convenient front panel controls
- VGA, HDMI, S-Video and composite video inputs
- Audio inputs
- VESA and console mountable

\* Only available on touch-screen version.

# Specifications

ENVIRONMENTAL		
Operating Temperature and Humidity	5°C to 40°C (41°F to 104°F) 20 – 85% Relative Humidity	
Certification	CE, FCC, RoHS	
SYSTEM		
Panel Size	21.5" LCD with LED backlight	
Resolution	1920 x 1080	
Pixel Pitch (H x V)	0.2482 x 0.2482	
Luminance	250 cd / m <sup>2</sup>	
Contrast	1000:1	
Aspect Ratio	16:9	
Viewing Angle	L / R : 85 / 85, U / D: 80 / 80	
Response Time	Tr+Tf=5 ms	
Video Signal	Analogue RGB Signal, Composite Signal 0.7~1.4Vpp / 75 Ohm, Y:1Vp-p, C:0.3Vp-p	
Video Color System	NTSC / PAL Auto Scanning	
Scan Frequency	H:31K~81kHz, V:60~75Hz	
OPERATION		
Front Panel Controls	Source / Exit, Menu / Enter, Down / -, Up / +, Power Switch, Touch Screen*	
Indicators	LED (Power On: Green Standby: Orange), OSD (No Signal, Source)	
OSD Language	English, Francais, Deutsch, Espanol, Italiano, Russian, Chinese (7)	
OSD Control	Picture	Contrast, Brightness, Tint, Saturation, Sharpness, Backlight, Color Temperature. VGA mode settings: Frequency, Phase, H-Position, V-Position, Auto Adjust
	Multi Screen	Multi Screen, Main Screen, Sub Screen, Sub Size, Sub Position, Sound Source, Swap
	Function	Language, Image Mode, OSD Time, Sleep Time, Source Lock, Key Lock, Anti Burn-In, 3DNR, ID Controller, Default
	Audio	Volume, Bass, Treble, Balance, Mute

INPUT/OUTPUT CONNECTOR	
Input Connectors	HDMI, VGA, Video Input & loop-out (BNC jack) x2, Video Input (S-Video), Audio Input L & R (RCA Jack) x2, PC Audio Input (3.5 Jack), Alarm Trigger Signal Input (3.5 Jack), USB (for touchscreen)* Power Input 12Vdc, 5A

MECHANICAL & ELECTRICAL	
Touch Screen*	Capacitive technology, finger input, glass overlay
Multi-screen	Picture in Picture & Picture by Picture
3D comb filter	Yes (PAL & NTSC)
De-interlace	Yes
Power Failure Auto Recovery	Yes
Anti Burn In	Yes
Source Lock and Key Lock	Yes
Audio Speaker	5W x2
Looping 75 ohm	Yes
Mounting	VESA 100 x 100 mm
Front Bezel Material	Steel
Enclosure Material	Steel
Stand Material	Steel
Power	AC 100-240V 50/60Hz, DC 12V/5A
Power Consumption	30W (Max)
Unit Dimension	520 x 381 x 170mm (W x H x D)
Weight	6.4 Kg
Colour	Black
Remote Controller	Optional
System ID Function	Yes (001-999)

PART CODES	
22" LCD Monitor	SYN-2241MV0
22" LCD Monitor with Touch Screen	SYN-2241MVT

\* Only available on touch-screen version.